



Elsevier / ABHES Master Teacher Award 2011

Master Teacher 2011



**Toni Bethel, ADN, CMA (AAMA), RN (1984); ANA RNC (1990)
Medical Assisting Instructor
Community Care College, Tulsa, OK**

**Community Care College Outstanding Instructor Award,
2007 and 2010**



Outstanding Peers & Colleagues



Philosophy / Neuroscience

Dr. Ernest Sachs – *12 Steps to Great Teaching*

Dr. Kevin Kirk – Have too many arrows

High expectations

The more ways,

the more connections,

the more “hard-wired”,

the better we retain the knowledge.

Arrows in My Quiver



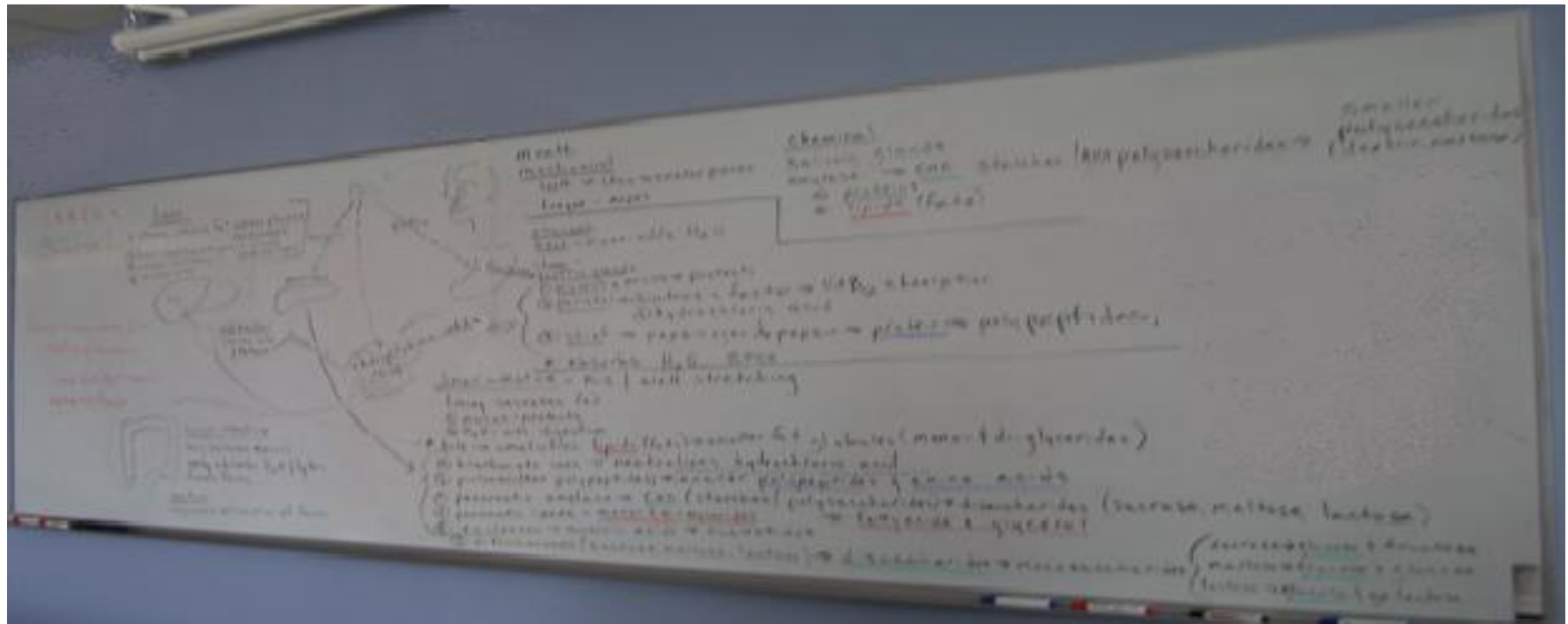
Have more arrows in your quiver than you can use. ~Dr. Kevin Kirk, CCC

The Basics

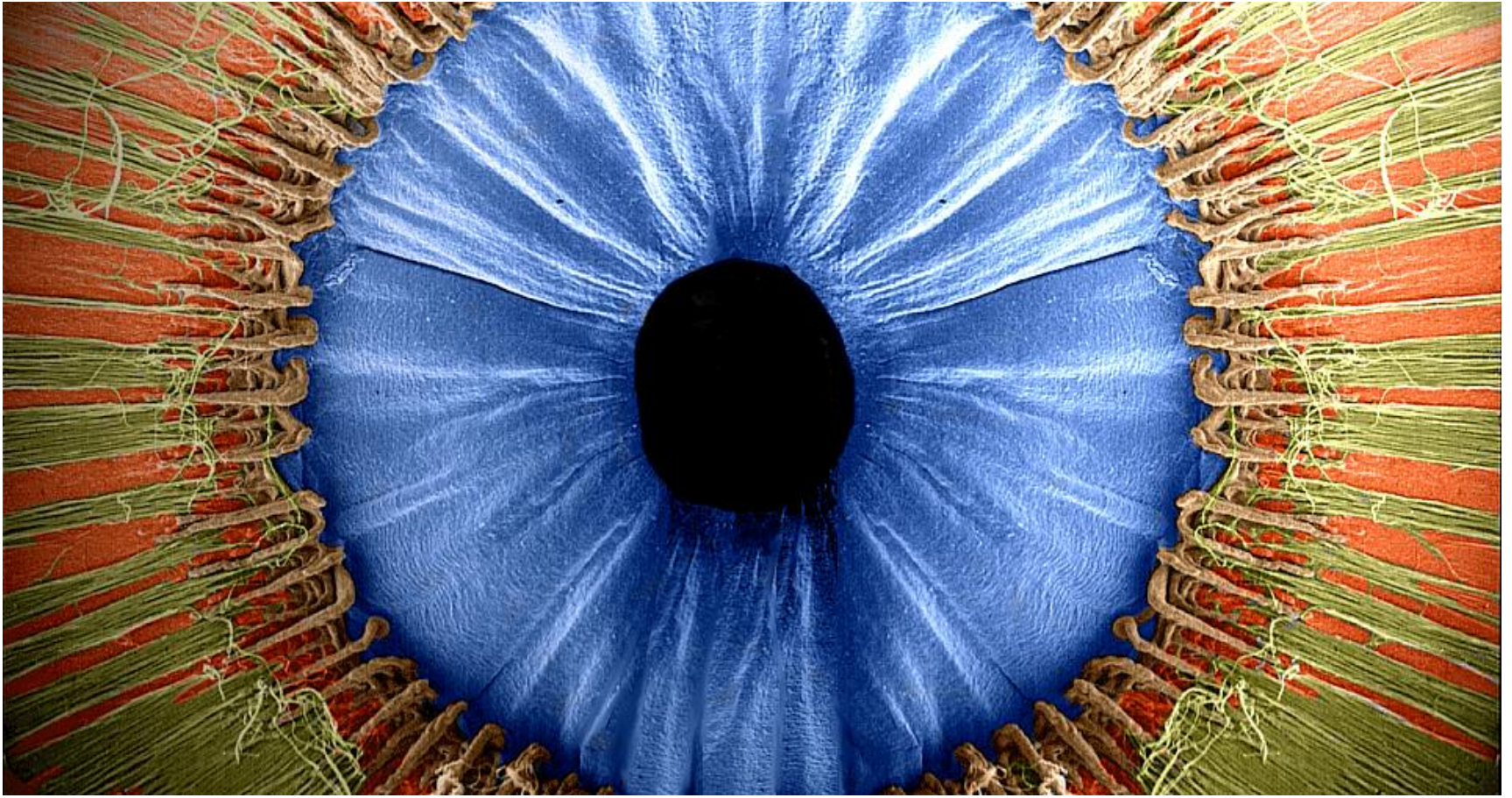
Lecture / Outline
Mnemonics
Worksheets
Manikins / "Props"
Workbooks
PowerPoints
Multimedia
Study Guides



Diagrams / Graphic Organizers



Images / Videos

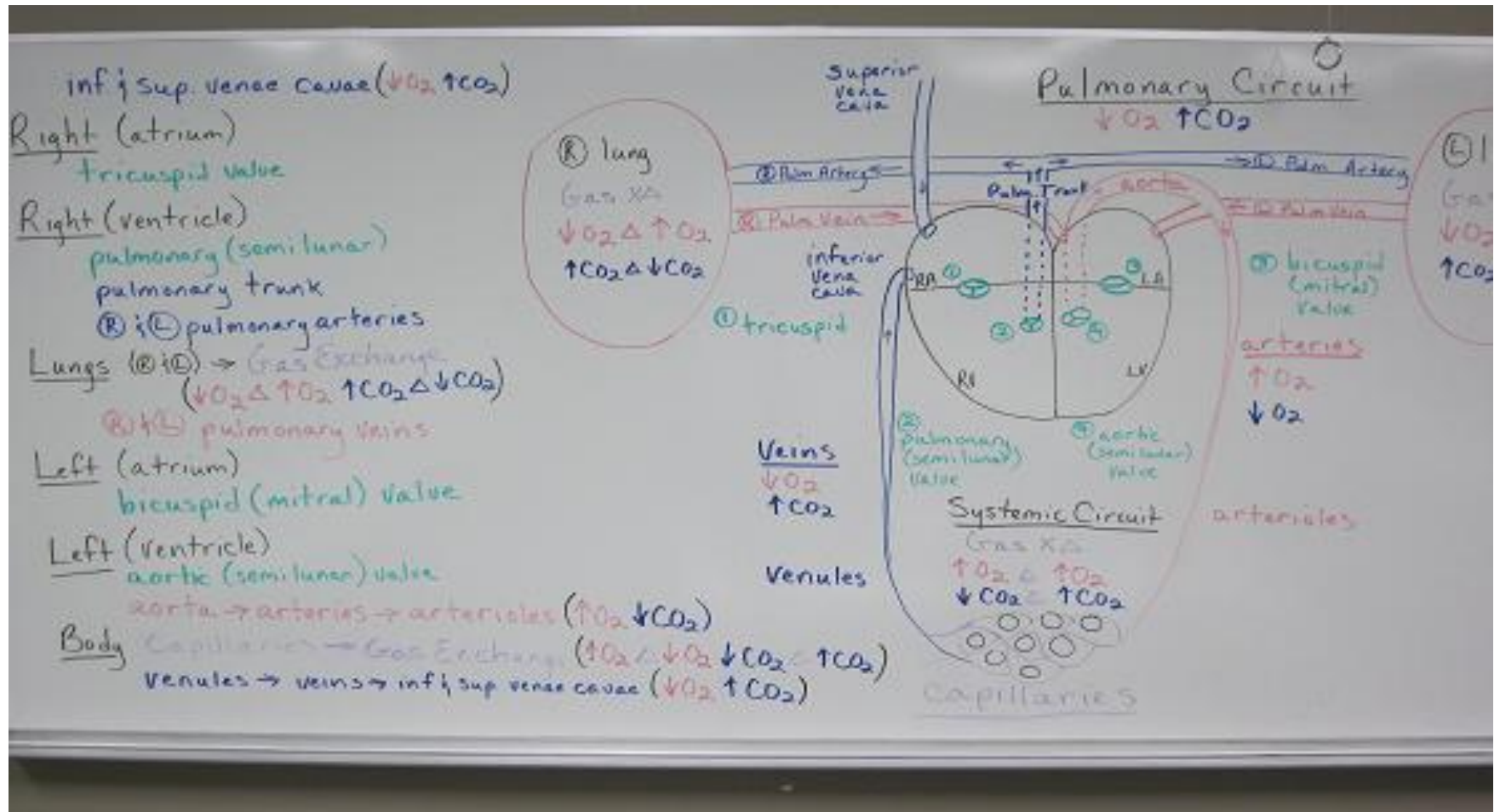


Assessments / Open Discussion



“Has anyone had any experience with this?”
“What was it like?”

Claps and Raps



Claps and Raps



“8-12-5-5-1”

Recitation / Miming & Gesturing

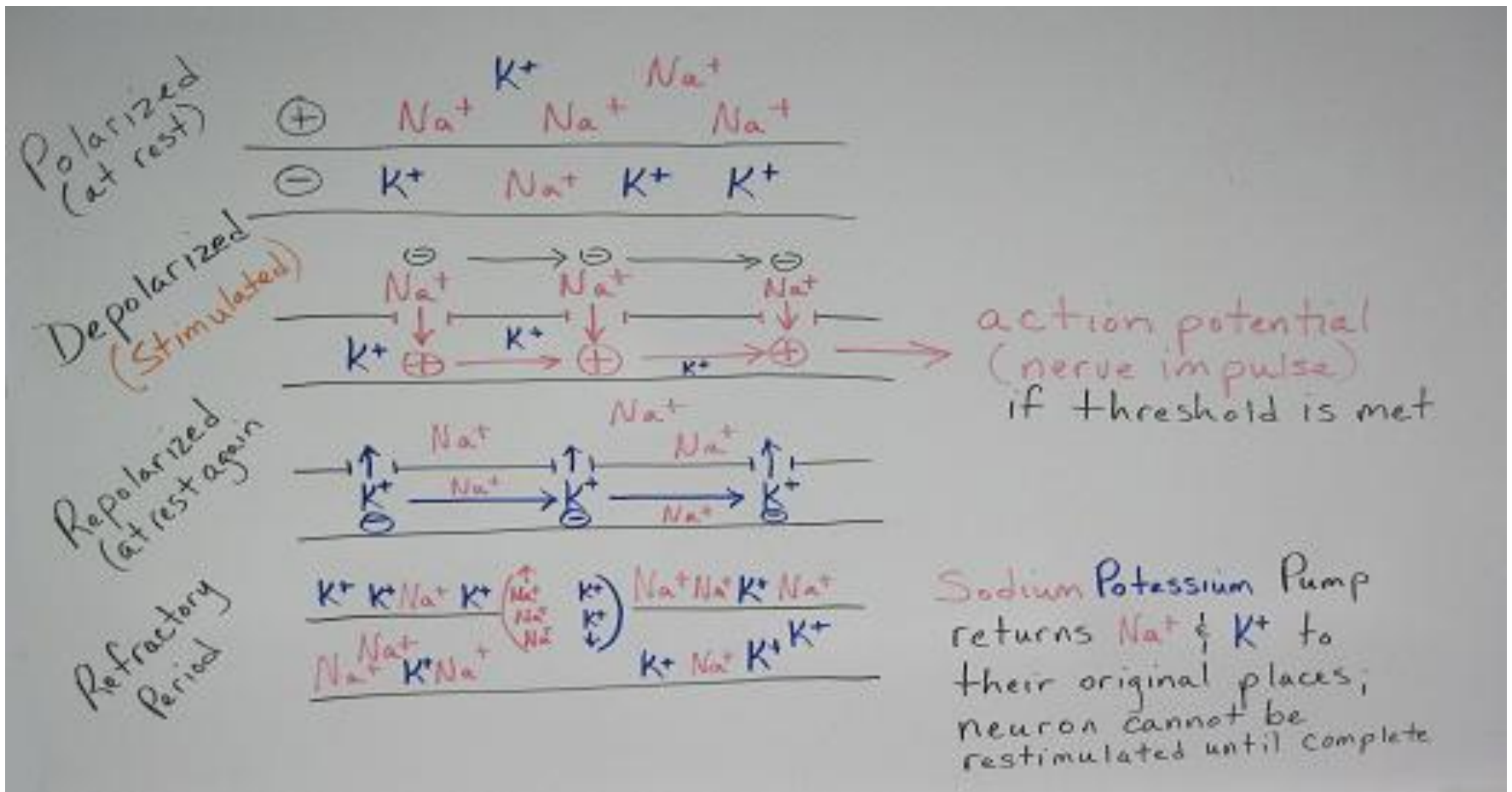


Comparisons / Explanations



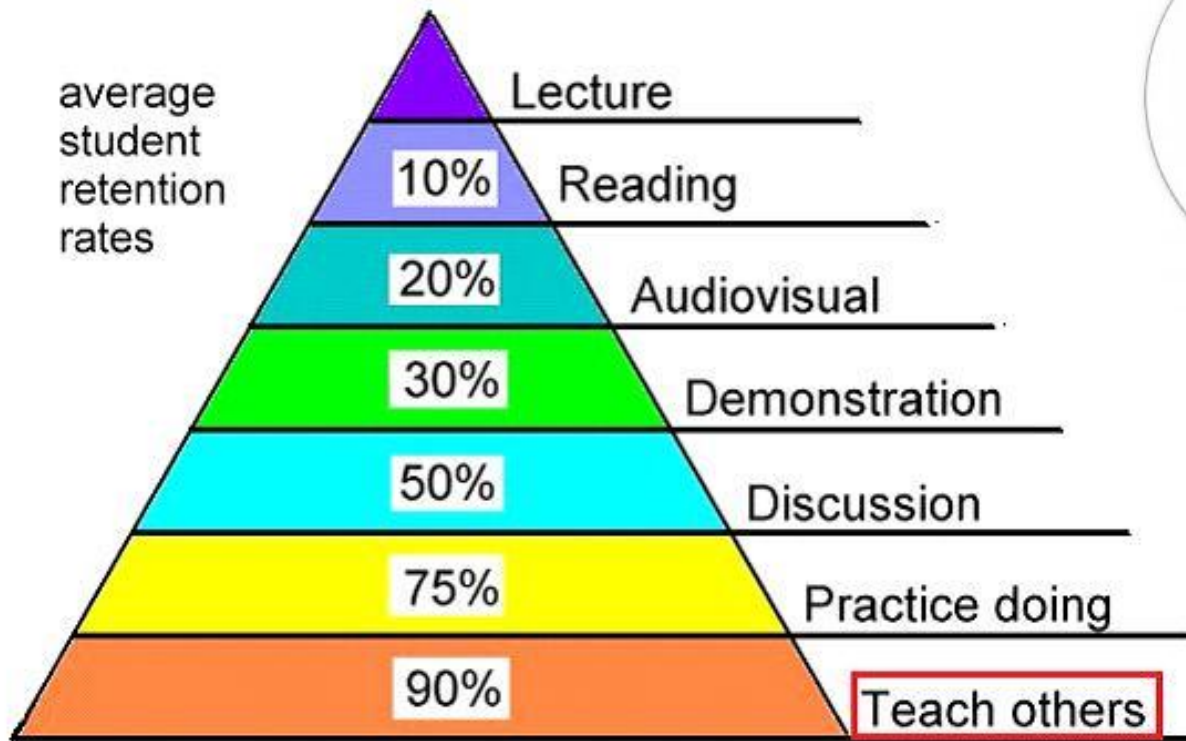
Explanations

Neuron Action Potential & Na⁺/K⁺ Roles



Daily Feedback

Reviews (students teach)



Source: National Training Laboratories, Bethel, Maine



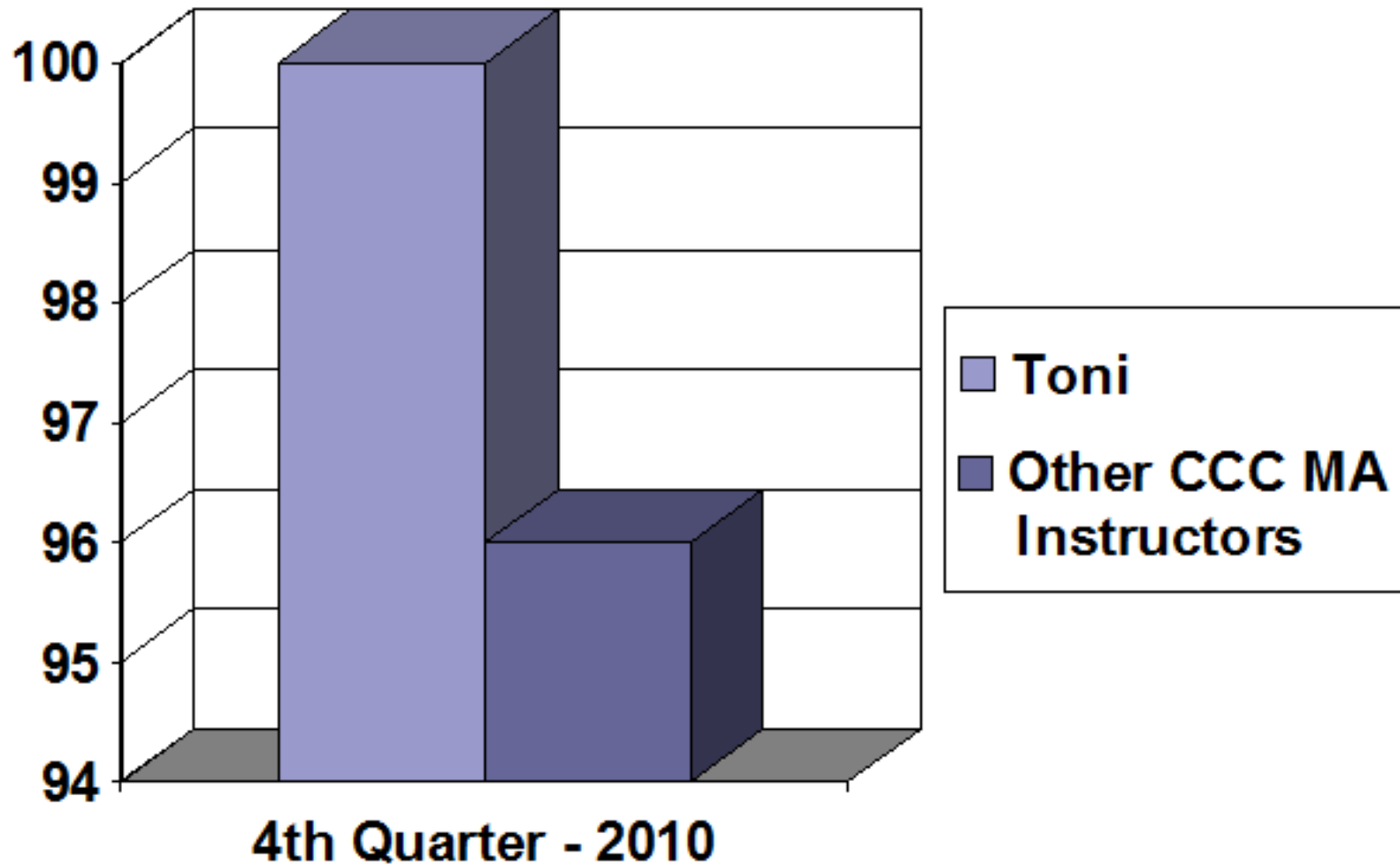
Lab and Skills



Recap

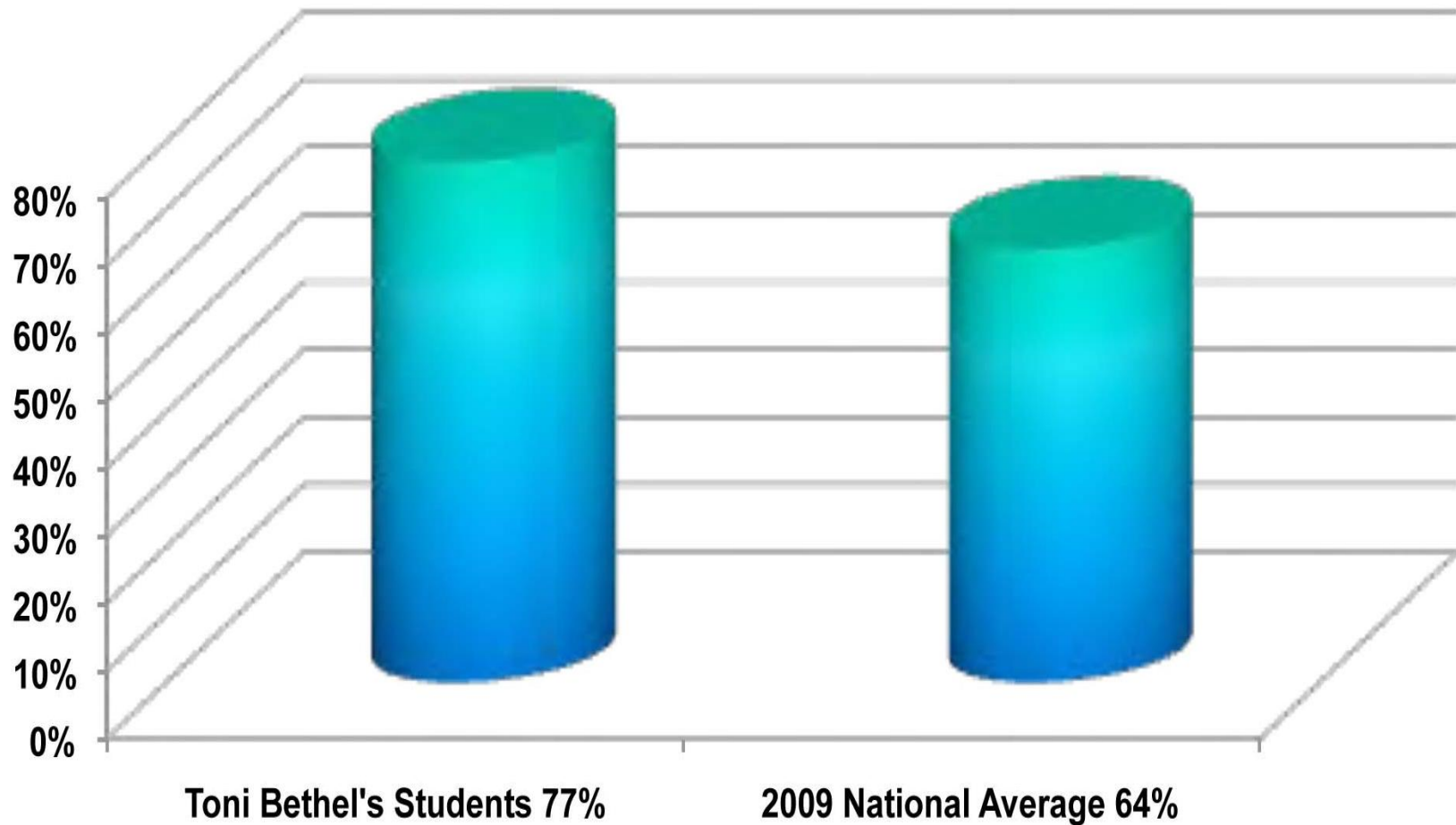


Retention Rate



CMA (AAMA) Pass Rate

2009 CMA Pass Rates Compared with the National Average



Passion



As teachers, we change our part of the world one life at a time.

Contact Information



**Toni Bethel, MA Instructor
Community Care College
Tulsa, OK**

For full presentation, please contact me at:

tbethel@communitycarecollege.edu

Appendix A: Dr. Ernest Sachs

Ernest Sachs' 12 Steps to Great Teaching

1. Know your subject thoroughly.
2. Be enthusiastic about teaching.
3. Be sincerely interested in students.
4. Link your subject matter with the everyday experience of your students.
5. Use illustrations and illustrative material whenever possible.
6. Make the student take an active part in every exercise.
7. Use his response as a guide for the next question.
8. Be adept in the art of questioning.
9. In exposition, be simple, logical, lucid.
10. In description, make the student see what you see.
11. In narration, arouse his curiosity.
12. Dramatize whenever possible, making use of suspense and surprise.

[Reprinted from the Yale Journal of Biology and Medicine, November 1952.]

Appendix B: Videos

Heart Valves video - Marcy Thomas (Wellesley)

<http://www.wellesley.edu/Biology/Courses/111/HeartValves.MOV>

learner.org video - Immune System Overview

<http://www.learner.org/courses/biology/archive/animations.html>

YouTube video - Neurite Outgrowth (annstewart82)

http://www.youtube.com/watch?v=n_9YTeEHp1E

Animation - CSF (UCLA Education) [22 sec]

<http://www.cnl.salk.edu/~fellous/courses/cogs17f2/csf.mov>

Eye Diseases videos - South Coast Eye Care Centers

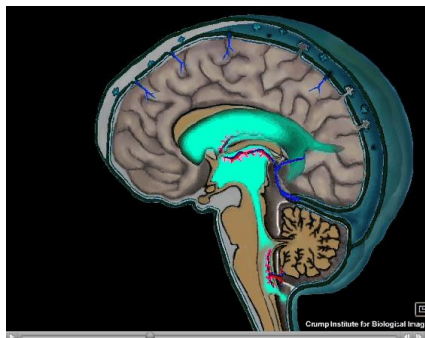
<http://www.southcoasteye.com/informational-videos.html>

YouTube video - Neutrophil Chemotaxis Chasing a Bacterium (FreeScienceClips)

http://www.youtube.com/watch?v=EpC6G_DGqkl

YouTube video - Neutrophil Chemotaxis (FreeScienceLectures)

<http://www.youtube.com/watch?v=ZUUfdP87Ssg>



Appendix C: Publisher's Multimedia

"Study Stack" Coding Vocabulary – interactive

<http://www.studystack.com/studytable-15888>

Korotkoff sounds audio - Sports Health

<http://www.csuchico.edu/atep/bp/bp.swf>

Hormone Drag & Drop Match - zerobio.com

http://www.zerobio.com/drag_oa/endo.htm

Structure of the Eye (label) - Sumanas Inc.

<http://www.sumanasinc.com/webcontent/toolsamples/sampledd.html>

Dosage Calculation Practice

<http://www.unc.edu/~bangel/quiz/testtab.htm>

Study Stack

Like 7524 likes. Sign Up to see what your friends like.

Ads by Google Medical Exam Study K12 Codes Pelvic Exam Gyno Exam

Home | Medical | Coding Test 1

MEDICAL coding - exam 1 Intro

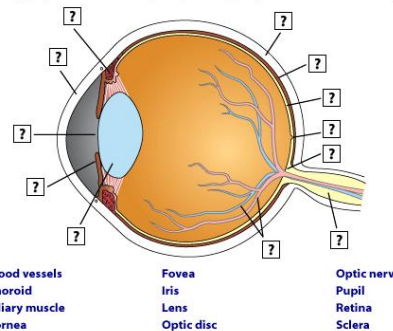
Quiz yourself by guessing what should be in each of the black rectangles below before clicking on it to display the answer.

Hide All Show All Shuffle Help

Question	Answer
show	systematic listing of proper names
show	grouping together of similar items
show	Diseases classified according to both anatomical location and the etiology, or cause.
show	classifying data and assigning a representation for the date. In healthcare coding means the assignment of numbers to represent diseases, procedures and supplies used in the delivery of healthcare.
show	confidentiality, communicate differently, statistics
show	International classification of Diseases 9th revision, clinical modification.

Activity: The Structure of the Eye

The diagram below depicts a cross-section of the human eye as viewed from above. Label the diagram by dragging each of the terms (blue) to the appropriate location on the diagram.



Feedback on your answer will appear here.

Drag-and-Drop Matching

"Endocrine System"

Drag the **hormones** (right) onto their correct **endocrine glands** (left).

Can't reach a box because it's too far up or down on the page?
Drag it to an empty space on the left and then move it up or down from there.

Press "check" to check your answers.

Check

pituitary gland	GnRH
adrenal gland (cortex)	testosterone
thyroid gland	melatonin
parathyroid gland	adrenalin
hypothalamus	erythropoietin
pancreas (alpha cells)	cortisol
	epinephrine